

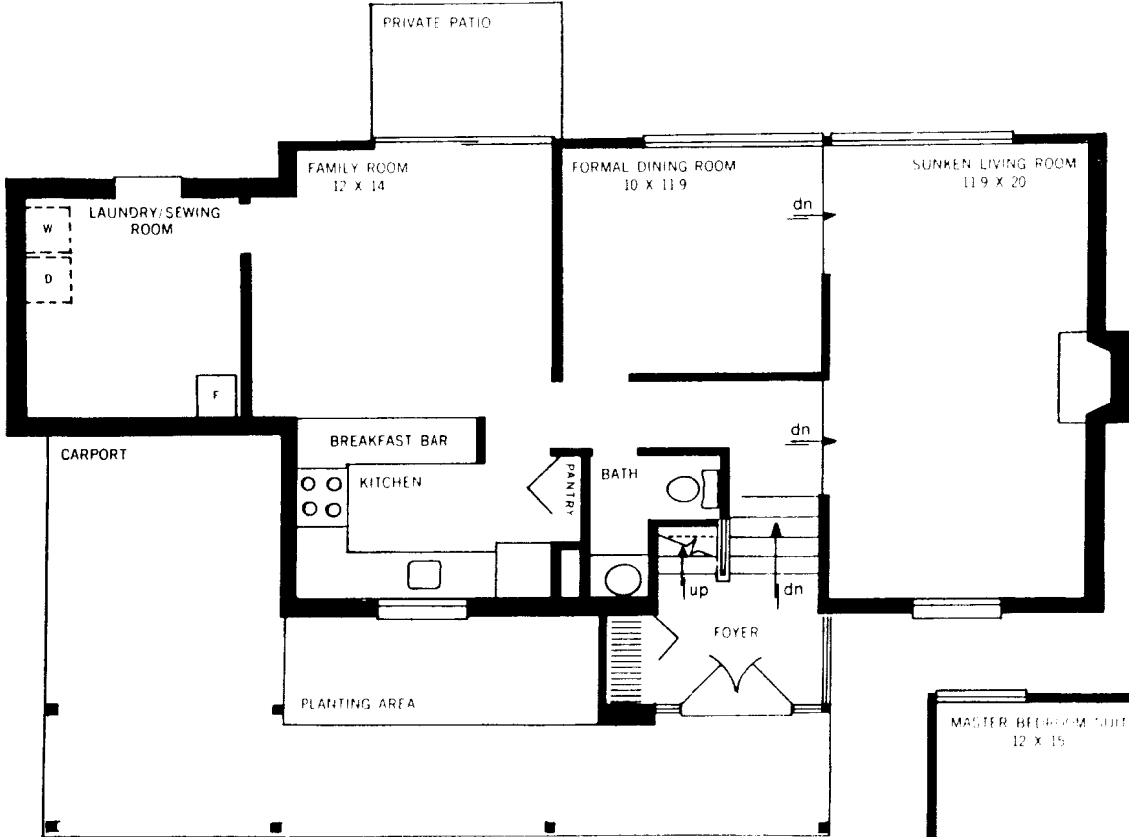
THE ELMWOOD—PLAN 500

- 4 bedrooms, 3 baths
- split foyer entrance
- separate family room with outdoor patio
- dramatic sunken living room with fireplace
- formal dining room
- fully equipped eat-in kitchen with breakfast bar
- laundry and sewing room
- outside planting area
- carport and air conditioning included

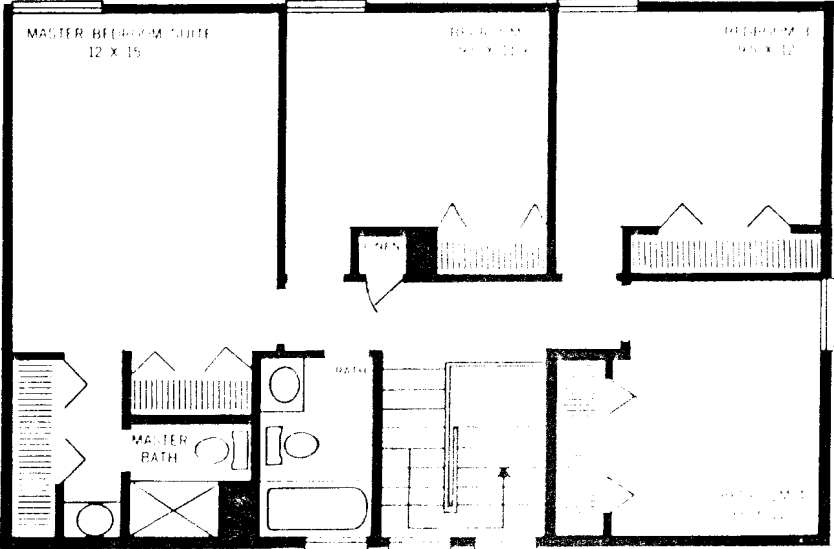
Sales office phone: (301) 924-2413

Another community by
Carl M. Freeman Associates, Inc.

In the continuing program of research and improvement, specifications and plans are subject to change without prior notice. Room sizes are approximate. All rights reserved by Carl M. Freeman Associates, Inc.



lower level



upper level